



**BUSINESS  
DEVELOPMENT**  
MISSISSIPPI

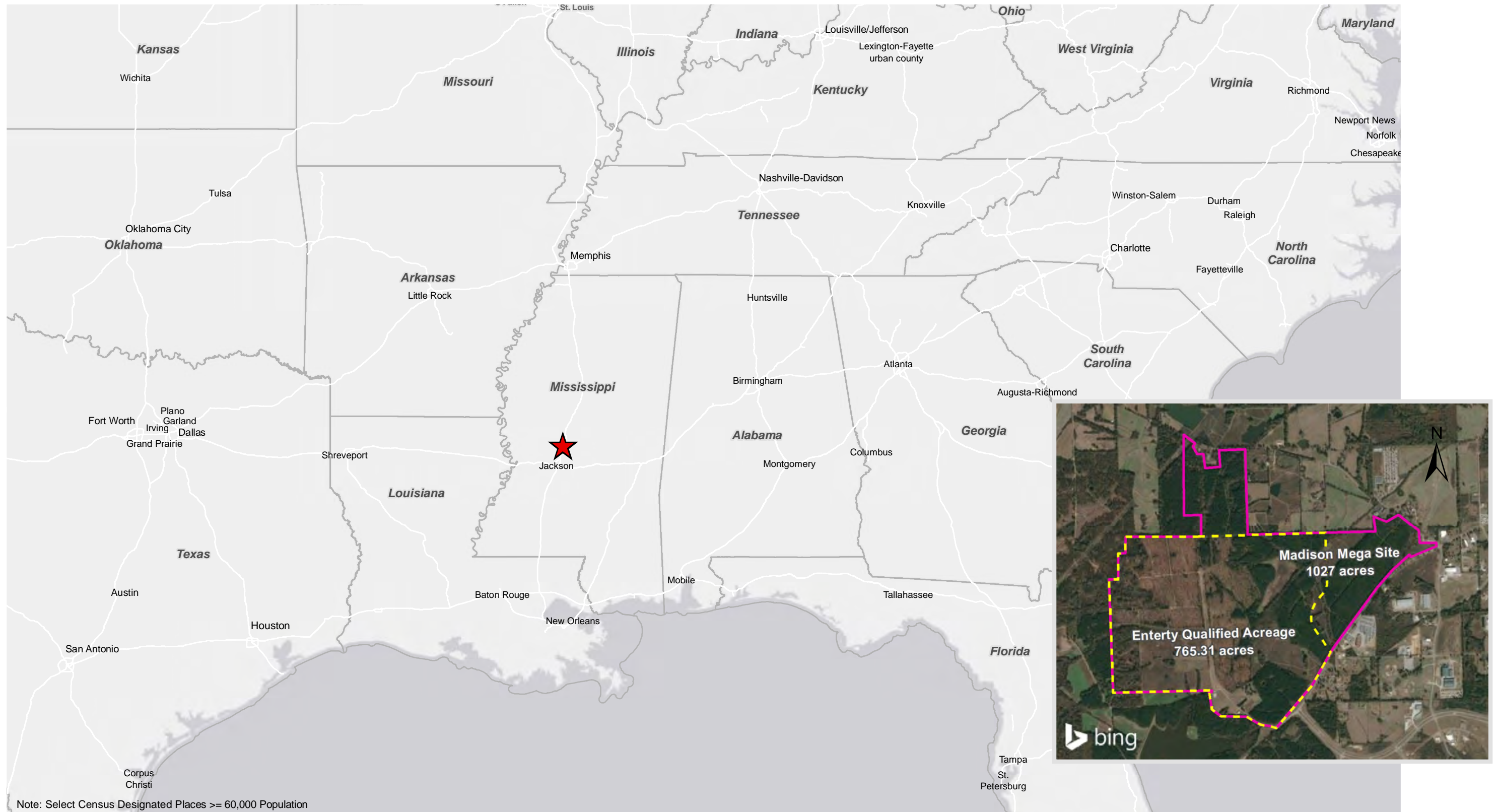
# MADISON COUNTY MEGA SITE

## Canton, MS

308 E Pearl St, Ste 500  
Jackson, MS 39201

Phone: (601)969-2645  
msed@entergy.com

[entergy-mississippi.com](http://entergy-mississippi.com)





# MADISON COUNTY MEGA SITE

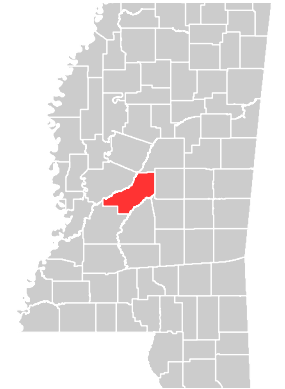
## Regional Transportation

308 E Pearl St, Ste 500  
Jackson, MS 39201

Phone: (601)969-2645  
msed@entergy.com

[entergy-mississippi.com](http://entergy-mississippi.com)

### MADISON COUNTY



### VICINITY



### LEGEND

- Madison County Mega Site
- Airports \*
- Ports
- Navigable Waterway
- Interstate
- Rail

\* Public with one or more passengers.

### NOTE

These drawings are provided merely to assist in economic development efforts. The Entergy Companies make no representations or warranties whatsoever regarding the accuracy or completeness of any information contained herein nor the condition or suitability of any properties. Users should direct inquiries about any property to the listing broker for that property.

### SOURCE

Roads - Census Tiger, 2018; Rail - Bureau of Transportation Stats, 2019; Property Point - BuildingsAndSites.com; Airports - Bureau of Transportation Stats, 2019; Ports - U.S. Army Corps of Engineers, LA Dept. of Transportation & Development, Visual Inspection; Navigable Waterways - Research and Innovative Technology Administration's Bureau of Transportation Statistics (RITA/BTS)

Created by: PCW  
Date: 5/2019

0 15 30  
Miles

0 9.5 19  
Kilometers







# MADISON COUNTY MEGA SITE

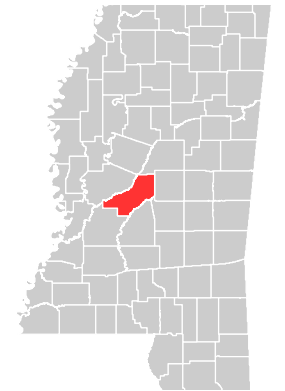
## Local Transportation

308 E Pearl St, Ste 500  
Jackson, MS 39201

Phone: (601)969-2645  
msed@entergy.com

[entergy-mississippi.com](http://entergy-mississippi.com)

### MADISON COUNTY



#### VICINITY



#### LEGEND

- Madison County Mega Site
- Entergy Qualified Acreage
- Rail
- Roads**
  - Interstate
  - US Highway
  - State Highway
  - Other

#### NOTE

These drawings are provided merely to assist in economic development efforts. The Entergy Companies make no representations or warranties whatsoever regarding the accuracy or completeness of any information contained herein nor the condition or suitability of any properties. Users should direct inquiries about any property to the listing broker for that property.

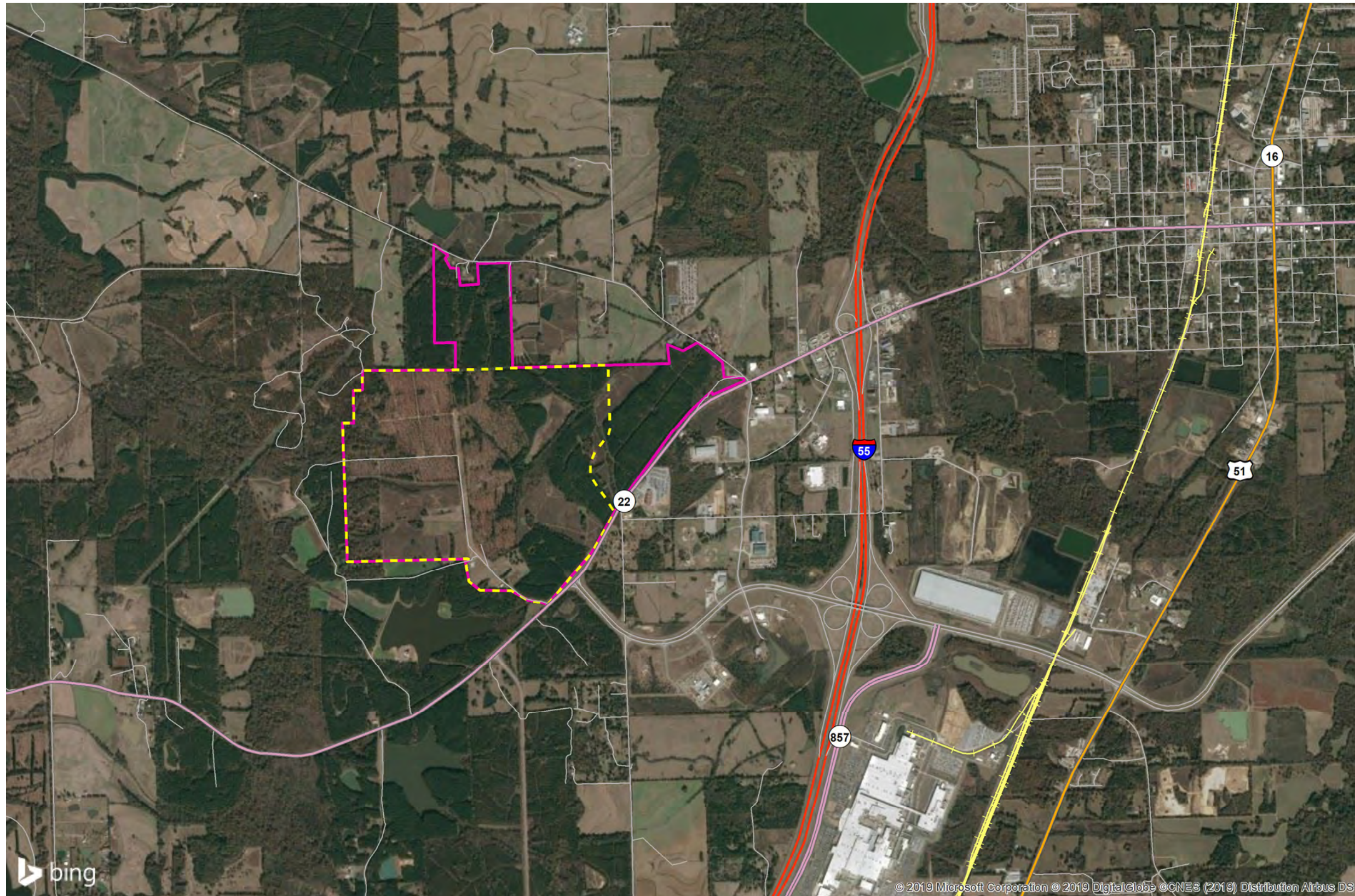
#### SOURCE

Roads: Census Tiger, 2018  
Rail: Bureau of Transportation Stats, 2019  
Property Boundary: BuildingsAndSites.com

Created by: PCW  
Date: 5/2019

0 0.5 1  
Miles

0 0.3 0.6  
Kilometers







BUSINESS  
DEVELOPMENT  
MISSISSIPPI

## MADISON COUNTY MEGA SITE

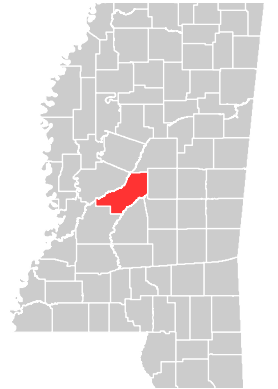
Aerial

308 E Pearl St, Ste 500  
Jackson, MS 39201

Phone: (601)969-2645  
msed@entergy.com

[entergy-mississippi.com](http://entergy-mississippi.com)

### MADISON COUNTY



#### VICINITY



#### LEGEND

- Madison County Mega Site (1027 acres)
- Entergy Qualified Acreage (765 acres)
- Roads**
  - Interstate
  - State Highway
  - Other

#### NOTE

These drawings are provided merely to assist in economic development efforts. The Entergy Companies make no representations or warranties whatsoever regarding the accuracy or completeness of any information contained herein nor the condition or suitability of any properties. Users should direct inquiries about any property to the listing broker for that property.

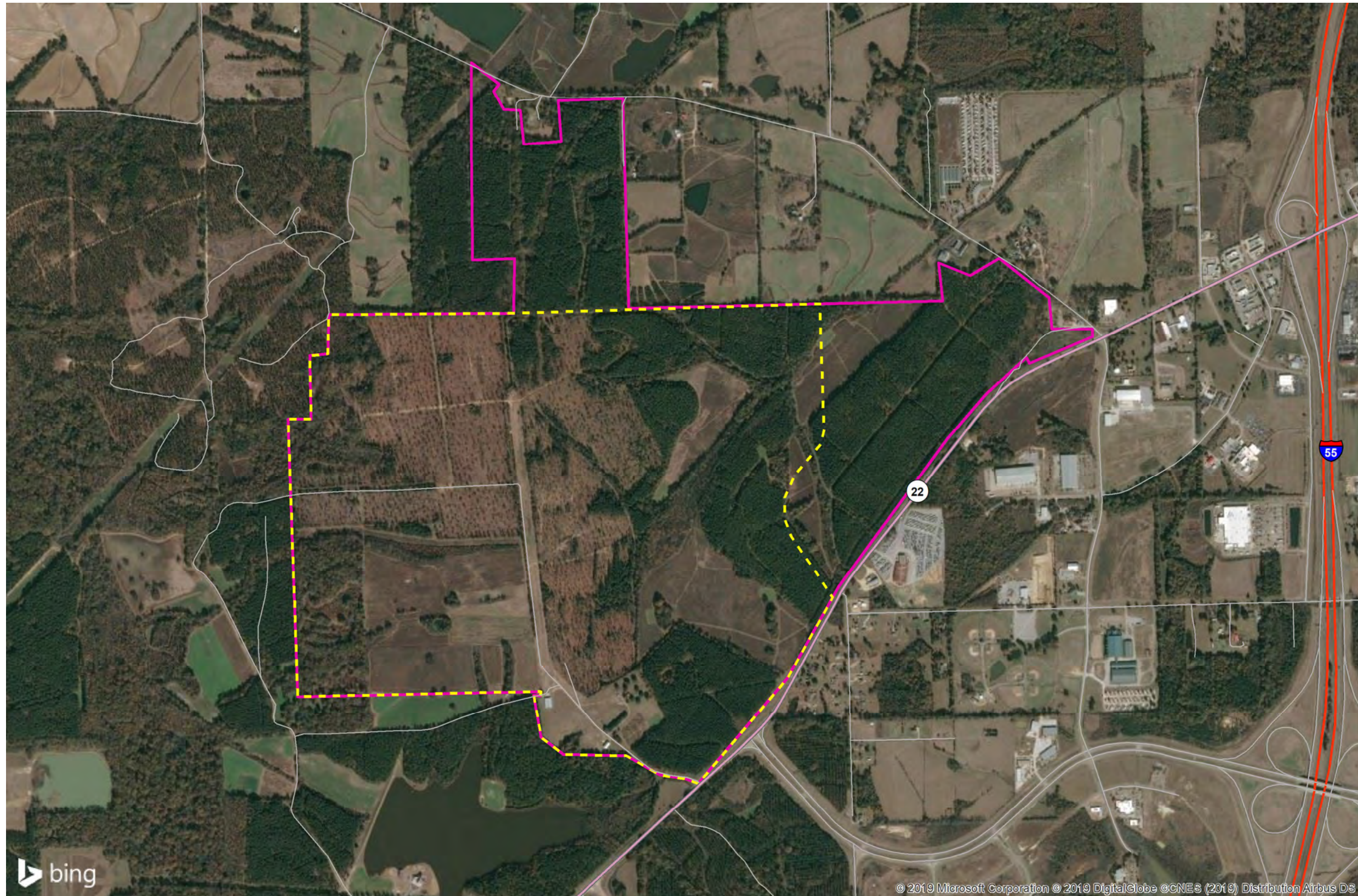
#### SOURCE

Roads: Census Tiger, 2018  
Rail: Bureau of Transportation Stats, 2019  
Property Boundary: BuildingsAndSites.com

Created by: PCW  
Date: 5/2019

0 0.25 0.5  
Miles

0 0.16 0.32  
Kilometers



© 2019 Microsoft Corporation © 2019 DigitalGlobe © CNES (2019) Distribution Airbus DS





# MADISON COUNTY MEGA SITE

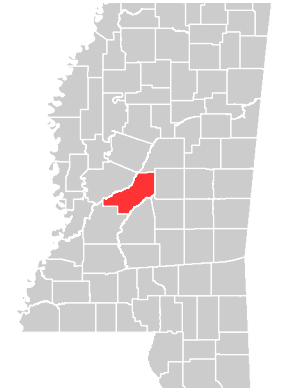
## Elevation Contours

308 E Pearl St, Ste 500  
Jackson, MS 39201

Phone: (601)969-2645  
msed@entergy.com

[entergy-mississippi.com](http://entergy-mississippi.com)

### MADISON COUNTY



### VICINITY



### LEGEND

- Madison County Mega Site (1027 acres)
- Entergy Qualified Acreage (765 acres)

#### Elevation Contours (feet)

- 205 - 215
- 220 - 230
- 235 - 245
- 250 - 260
- 265 - 275
- 280 - 290

#### Contour Statistics for Entergy Qualified Acreage

Minimum:	225
Maximum:	280
Mean:	249.75
Standard Deviation:	17.17

### NOTE

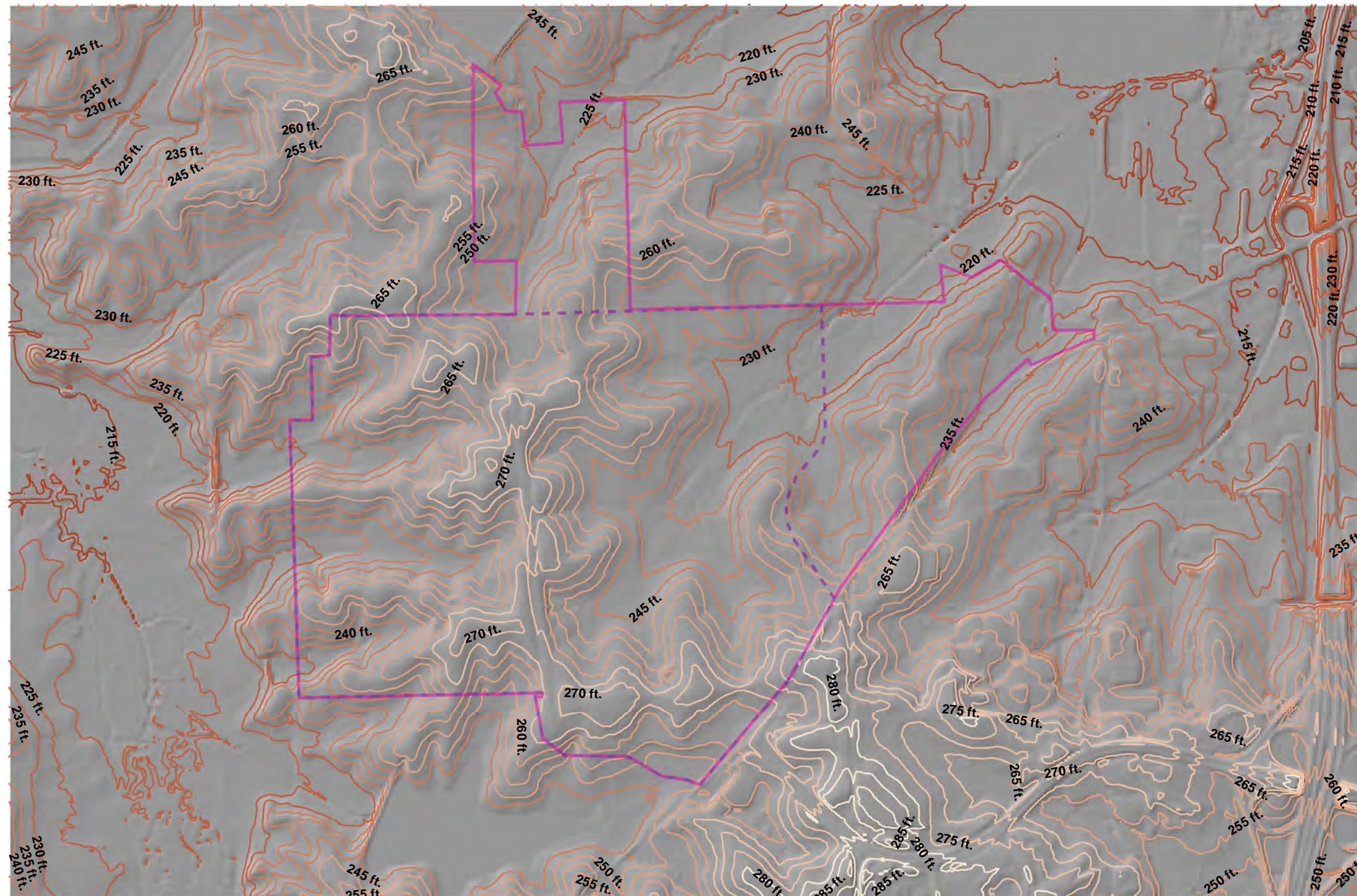
These drawings are provided merely to assist in economic development efforts. The Entergy Companies make no representations or warranties whatsoever regarding the accuracy or completeness of any information contained herein nor the condition or suitability of any properties. Users should direct inquiries about any property to the listing broker for that property.

### SOURCE

Terrain: Source: Airbus, USGS, NGA, NASA, CGIAR, NLS, OS, NMA, Geodatastyrelsen, GSA, GSI and the GIS User Community  
Property Boundary: BuildingsAndSites.com  
Created by: PCW  
Date: 5/2019

0 1,500 3,000  
Feet

0 180 360  
Meters







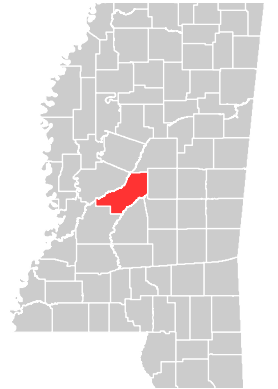
BUSINESS  
DEVELOPMENT  
MISSISSIPPI

# MADISON COUNTY MEGA SITE

## FEMA Flood Zones

308 E Pearl St, Ste 500  
Jackson, MS 39201  
  
Phone: (601)969-2645  
msed@entergy.com  
  
entergy-mississippi.com

### MADISON COUNTY



### VICINITY



### LEGEND

- Madison County Mega Site (1027 acres)
- Entergy Qualified Acreage (765 acres)
- FEMA Flood Zones**
  - A,
  - AE,
  - AE, FLOODWAY
  - X, 0.2 PCT ANNUAL CHANCE FLOOD HAZARD
  - X, AREA OF MINIMAL FLOOD HAZARD

Flood Zones, Definition/Description  
<https://www.fema.gov/flood-zones>

### NOTE

These drawings are provided merely to assist in economic development efforts. The Entergy Companies make no representations or warranties whatsoever regarding the accuracy or completeness of any information contained herein nor the condition or suitability of any properties. Users should direct inquiries about any property to the listing broker for that property.

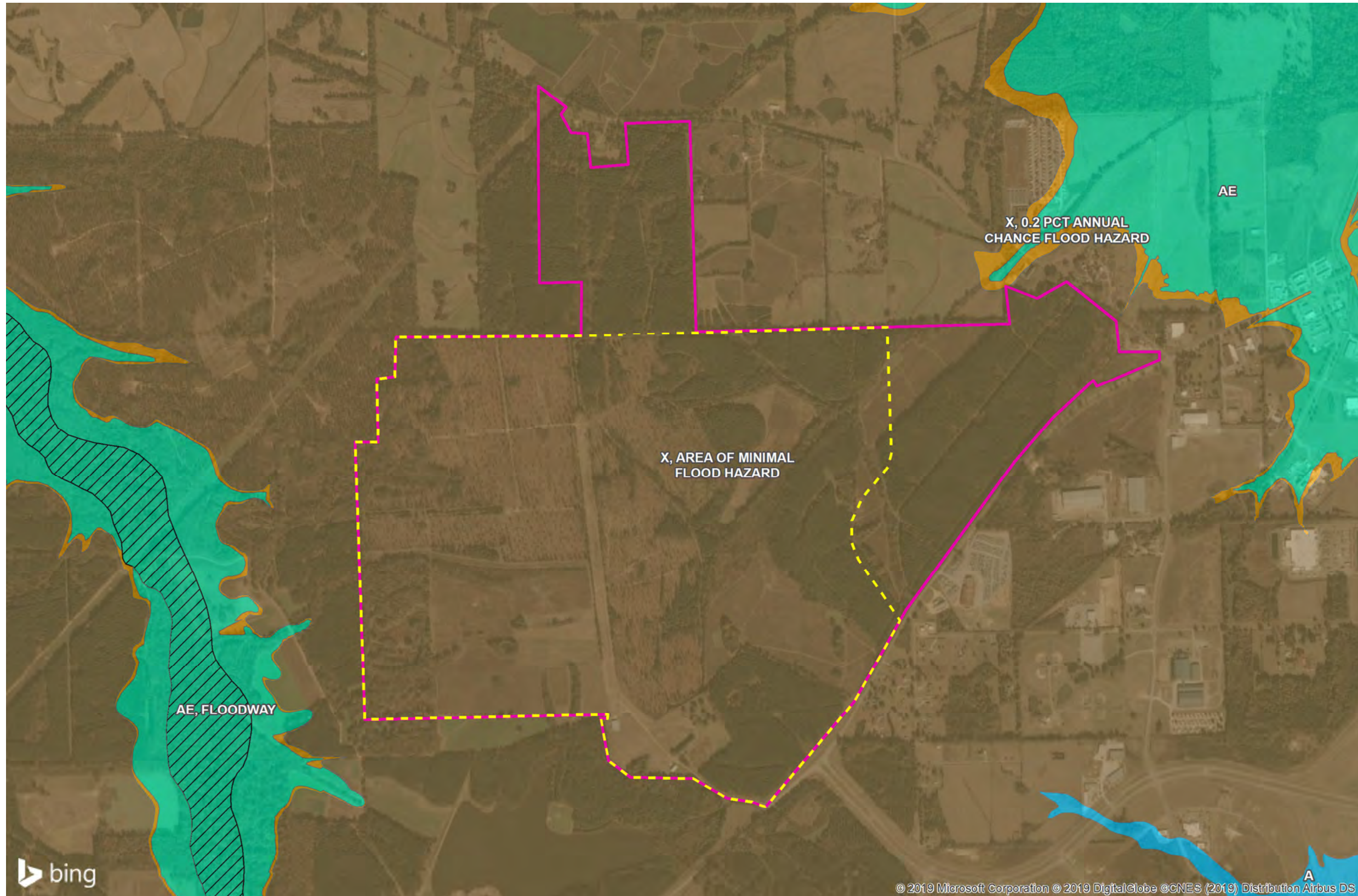
### SOURCE

Flood Zones: Federal Emergency Management Agency, 04/2019  
Property Boundary - BuildingsAndSites.com

Created by: PCW  
Date: 5/2019

0 0.25 0.5  
Miles

0 0.16 0.32  
Kilometers







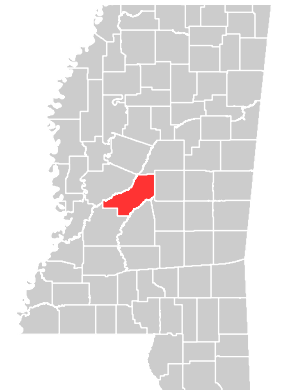
**BUSINESS  
DEVELOPMENT**  
MISSISSIPPI

# MADISON COUNTY MEGA SITE

## National Wetlands Inventory

308 E Pearl St, Ste 500  
Jackson, MS 39201  
  
Phone: (601)969-2645  
msed@entergy.com  
[entergy-mississippi.com](http://entergy-mississippi.com)

### MADISON COUNTY



#### VICINITY



#### LEGEND

- Madison County Mega Site (1027 acres)
- Entergy Qualified Acreage (765 acres)
- Wetlands**
  - Freshwater Forested/Shrub Wetland
  - Freshwater Pond
  - Riverine

#### Wetlands Code Interpreter

<https://fwsprimary.wim.usgs.gov/decoders/wetlands.aspx>

#### NOTE

These drawings are provided merely to assist in economic development efforts. The Entergy Companies make no representations or warranties whatsoever regarding the accuracy or completeness of any information contained herein nor the condition or suitability of any properties. Users should direct inquiries about any property to the listing broker for that property.

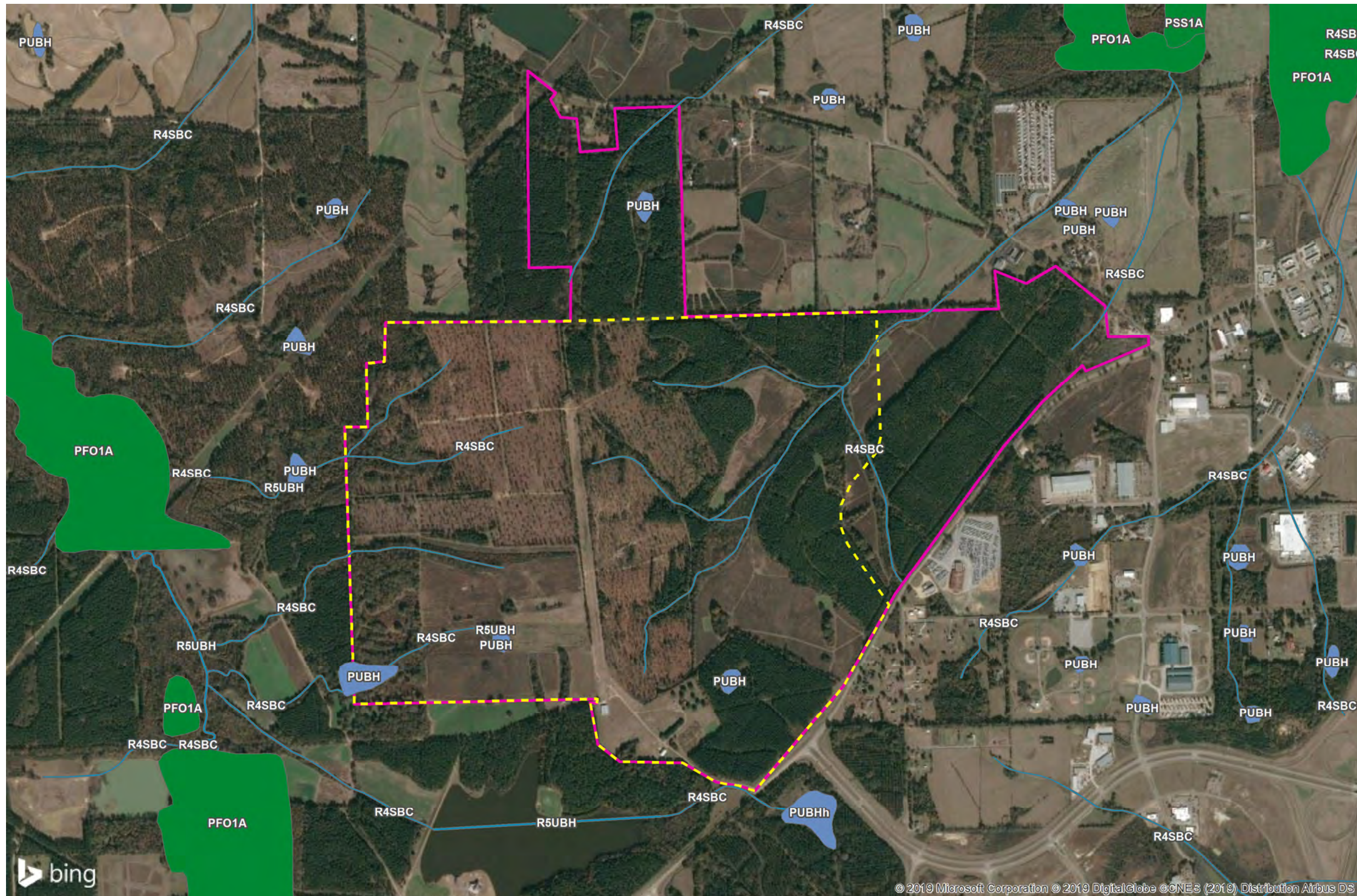
#### SOURCE

Wetlands - U.S. Fish & Wildlife Service, National Wetlands Inventory, Oct. 2018; Property Boundary - BuildingsAndSites.com

Created by: PCW  
Date: 5/2019

0 0.25 0.5  
Miles

0 0.16 0.32  
Kilometers







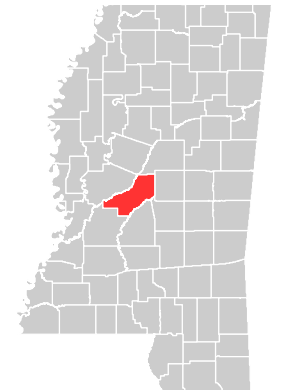
BUSINESS  
DEVELOPMENT  
MISSISSIPPI

# MADISON COUNTY MEGA SITE

## Transmission Pipelines

308 E Pearl St, Ste 500  
Jackson, MS 39201  
Phone: (601)969-2645  
msed@entergy.com  
entergy-mississippi.com

### MADISON COUNTY



### VICINITY



### LEGEND

- Madison County Mega Site (1027 acres)
- Entergy Qualified Acreage (765 acres)
- Pipelines**
  - Miscellaneous, Carbon Dioxide
  - Natural Gas

### NOTE

These drawings are provided merely to assist in economic development efforts. The Entergy Companies make no representations or warranties whatsoever regarding the accuracy or completeness of any information contained herein nor the condition or suitability of any properties. Users should direct inquiries about any property to the listing broker for that property.

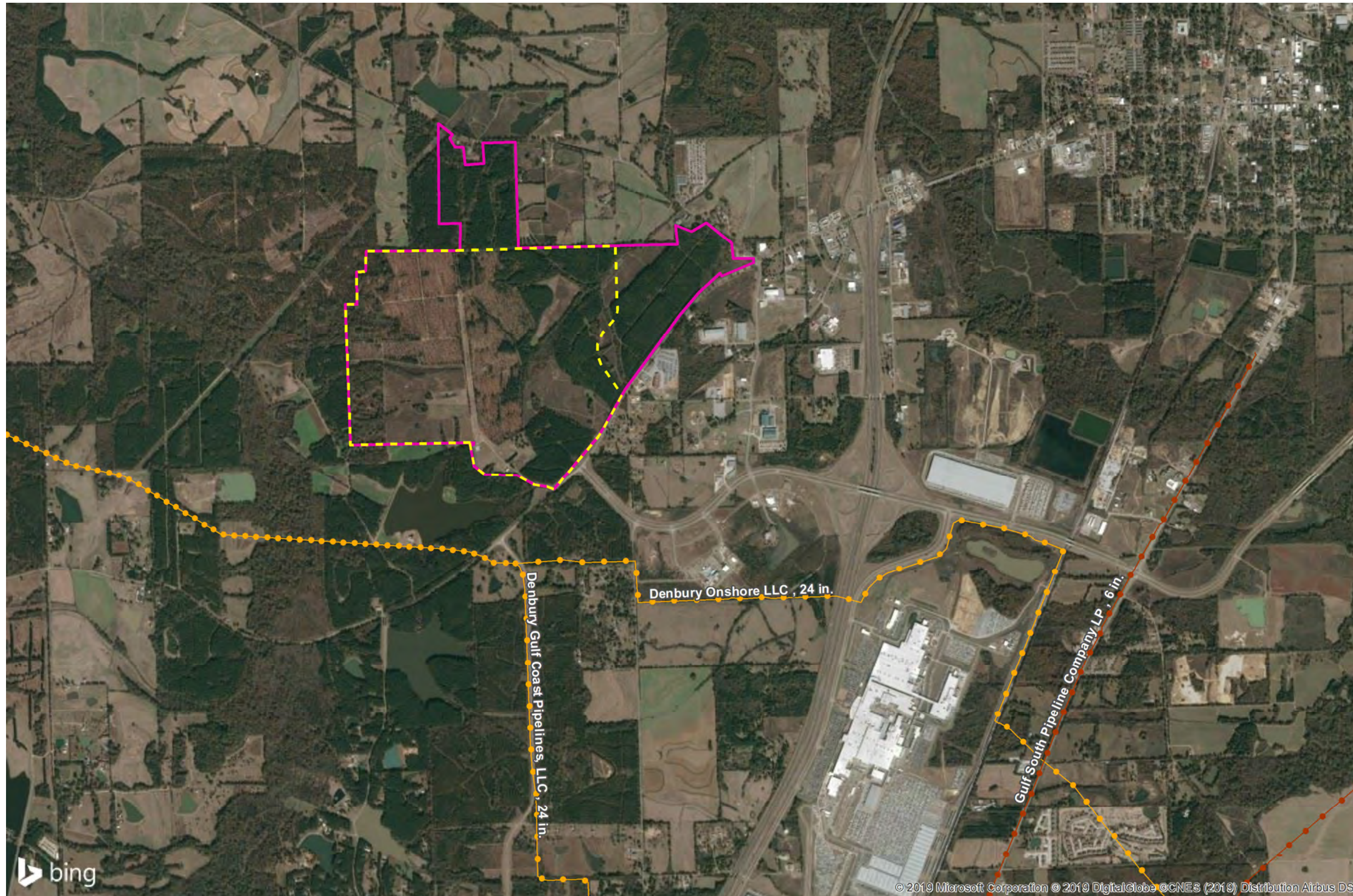
### SOURCE

Pipelines: PennWell Map Search, 2018; NPMS Public Viewer, 2019  
Property Boundary : BuildingsAndSites.com

Created by: PCW  
Date: 5/2019

0 0.5 1  
Miles

0 0.32 0.64  
Kilometers







BUSINESS  
DEVELOPMENT  
MISSISSIPPI

## MADISON COUNTY MEGA SITE

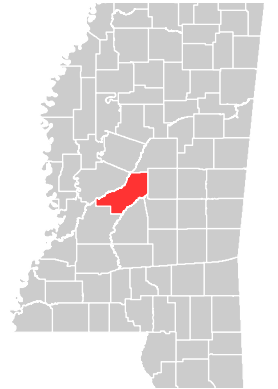
Entergy's Electrical Infrastructure

308 E Pearl St, Ste 500  
Jackson, MS 39201

Phone: (601)969-2645  
msed@entergy.com

[entergy-mississippi.com](http://entergy-mississippi.com)

### MADISON COUNTY



#### VICINITY



#### LEGEND

	Madison County Mega Site (1027 acres)
	Entergy Qualified Acreage (765 acres)
<b>Substations (kV)</b>	
	230
<b>Transmission Lines (kV)</b>	
	500
	230
	115
<b>Distribution</b>	
	Three Phase
	Two Phase
	Single Phase

#### NOTE

These drawings are provided merely to assist in economic development efforts. The Entergy Companies make no representations or warranties whatsoever regarding the accuracy or completeness of any information contained herein nor the condition or suitability of any properties. Users should direct inquiries about any property to the listing broker for that property.

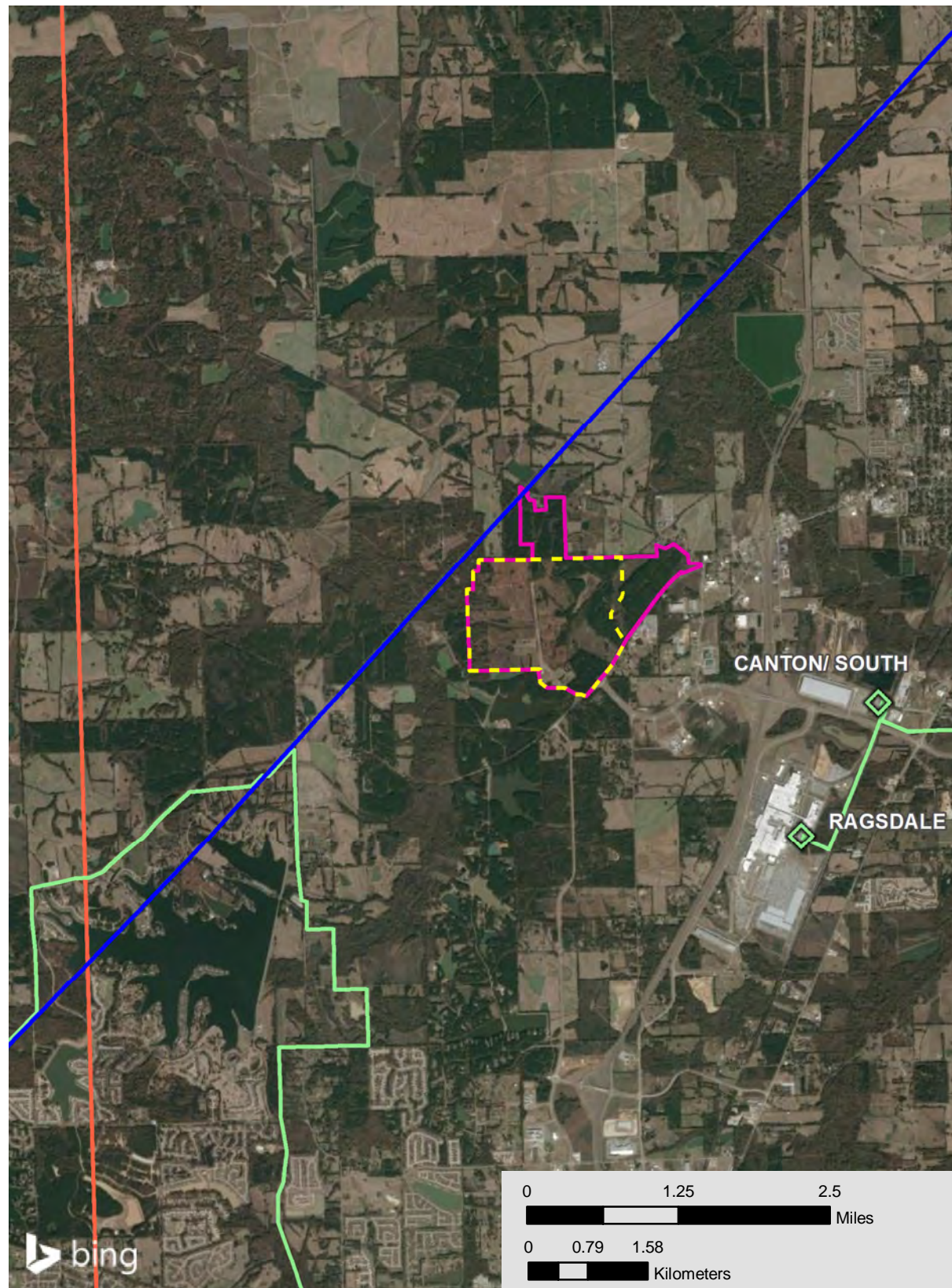
#### SOURCE

Entergy, 2019  
Property Boundary : BuildingsAndSites.com



Created by: PCW  
Date: 5/2019

#### Transmission



#### Distribution

