

# Tunica Metro Mega Site

Tunica, Mississippi

**High Potential Site**

Entergy Mississippi, Inc.



***This Qualified Site is ready for development!***

- CONTROL OF LAND ..... ✓
- SITE ASSESSMENTS ..... ✓
- TRANSPORTATION INFRASTRUCTURE IMPROVEMENTS ..... ✓
- UTILITY INFRASTRUCTURE IMPROVEMENTS ..... ✓
- ANNEXATION & ZONING ..... ✓
- DETAILED DEVELOPMENT PLAN ..... ✓



[MississippiSiteSelection.com](http://MississippiSiteSelection.com)

CONTACT:  
Taurus Wright 601-969-2349 [twrigh3@entergy.com](mailto:twrigh3@entergy.com)  
Brent Barfield 601-969-2353 [jbarfie@entergy.com](mailto:jbarfie@entergy.com)



# Tunica Metro Mega Site

Tunica, Mississippi

**High Potential Site**

Entergy Mississippi, Inc.

## Profile

The Tunica Metro Mega Site is located in Northwest Mississippi just 30 minutes south of Memphis, the distribution hub of America. Sites are available up to 2,221 acres and the area enjoys some of the lowest property taxes in the Southeastern U.S.

This Entergy Mississippi Qualified Site is ready for development!

## Labor - Tunica Co.

60 mi. radius

### Population\*

October 2012 Estimate...1,476,753

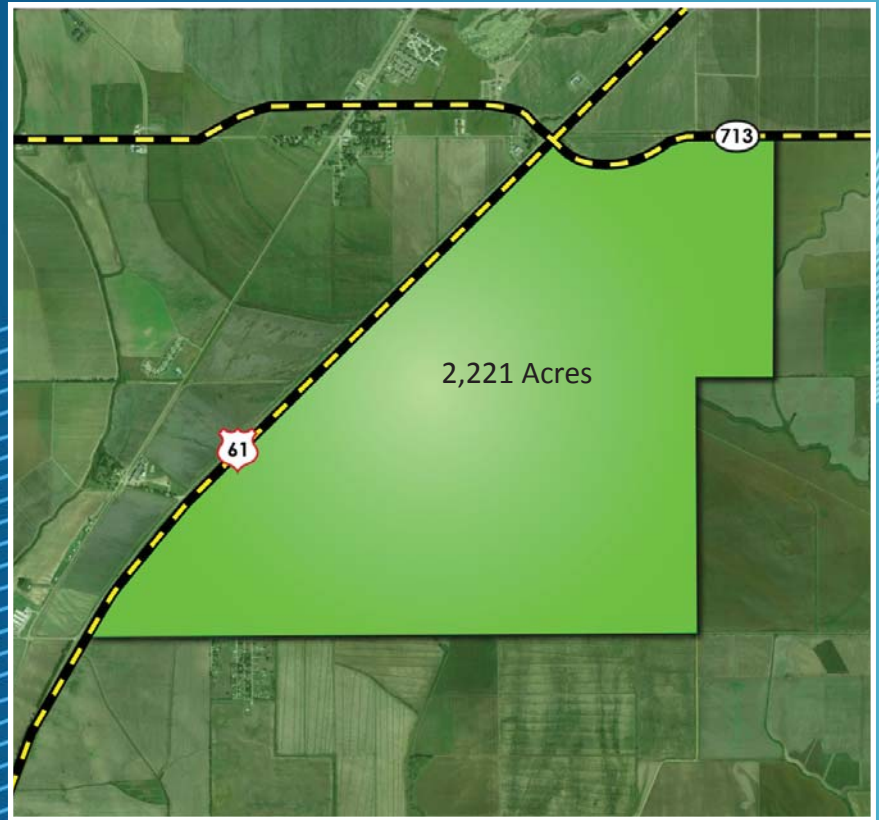
### Civilian Labor Force\*

October 2012 Estimate...730,784

### Unemployment Rate\*

October 2012 Estimate . . . 12%

\*Source: Synergos Technologies, Inc.



## Location Advantages

### METRO PROXIMITY:

The Tunica Metro Mega Site has the benefit of the Metro Memphis area labor force within a 60 mile area. The quality of life, adaptable economy and infrastructure all support a high growth environment.

### TRANSPORTATION:

The site is located within 25 minutes of the Memphis International Airport. Tunica Airport provides a 8,500 foot runway expandable to 10,000 feet. The Tunica Airport can support aircraft up to 727's, 737's and MD 80's. Interstates 40, 55 and 69 are readily accessible from the site.

### REGIONAL GROWTH:

Tunica County's government is experienced in long term planning and execution of large projects. Its leadership understands the importance of business to grow the county and is willing to finance/support projects within the framework of Mississippi law.

### WORKFORCE:

Ten colleges and universities are within a 60 mile radius of the site. Northwest Mississippi Community College has an excellent reputation in workforce training and development.



### CONTACT:

Taurus Wright 601-969-2349 [twright3@entergy.com](mailto:twright3@entergy.com)  
Brent Barfield 601-969-2353 [jbarfie@entergy.com](mailto:jbarfie@entergy.com)